



CPT series

1.0 Product Overview

- Uses the AGM insulation board. There is no fluid electrolyte in the battery and it can be placed in many positions without leaking liquid.
- One never needs to add water or check the proportion of vitriol and the equiangular charge. This helps you reduce maintenance costs and time.
- During normal usage, corrosive gas will not be generated.
- With our special formula to manufacture lead calcium alloy, the product has a high causticity-resistance and long life. Usage life can reach 10-15 years.
- A low self-discharge rate and long storage time
- Uses ABS plastic crust; burn prevention level can be up to UL94V-O.
- Before delivery, all products pass capacity testing to provide stable and reliable performance.
- The production process is ISO9001 certified and the batteries are manufactured to pass UL specifications.

2.0 Product Application

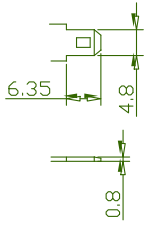


- Communication Systems
- Power Control Systems
- Fire Alarm And Security Systems
- Emergency Lighting Equipment
- UPS Power Supplies
- Various Telemetry And Medical Equipment
- Solar Power Storage Systems
- Motor ignition systems.

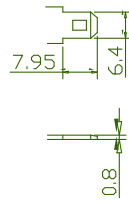
NOTE: For technical battery including discharge specifications please contact us.

Model	Nominal Voltage (V)	Nominal Capacity (Ah)	Dimensions (mm/inch)				Weight	Terminal Position	Terminal Type	
			Length	Width	Height	Total height				
			mm/inch	mm/inch	mm/inch	mm/inch	Kg/Lb			
CPT2-200	2	200	173/6.81	111/4.37	329/12.95	365/14.37	15.0/33.07	G	F6	
CPT2-300	2	300	171/6.73	151/5.94	330/12.99	366/14.41	22.0/45.50	G	F6	
CPT2-400	2	400	211/8.31	176/6.93	329/12.95	367/14.45	30.0/66.14	H	F6	
CPT2-500	2	500	241/9.49	172/6.77	331/13.03	366/14.41	36.0/79.37	H	F6	
CPT2-600	2	600	301/11.85	175/6.89	331/13.03	366/14.41	43.0/94.80	H	F6	
CPT2-800	2	800	410/16.14	175/6.89	330/12.99	365/14.37	60/132.28	I	F6	
CPT2-1000	2	1000	475/18.70	175/6.89	328/12.91	365/14.37	72/158.73	I	F6	
CPT2-1500	2	1500	401/15.79	351/13.82	342/13.46	378/14.88	116/255.7	J	F11	
CPT2-2000	2	2000	491/19.33	351/13.82	344/13.54	383/15.08	146/321.87	J	F11	
CPT2-3000	2	3000	712/28.03	353/13.90	341/13.43	382/15.04	210/462.9	K	F11	

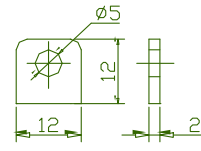
Terminals



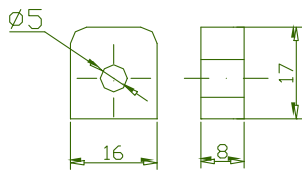
F1



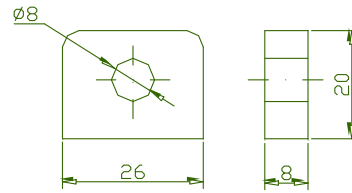
F2



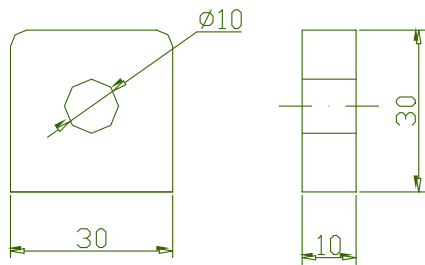
F3



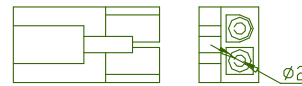
F4



F5



F6



F7